

# Eye Music presents 2016 Colourscape Music Festival on Clapham Common

The Colourscape Music Festival has appeared annually on Clapham Common since 1989 – the only contemporary music festival to take place actually inside a sculpture. Composers Lawrence Casserley and Simon Desorgher originally founded their south London music festival in Nettlefold Hall, West Norwood. When they encountered Colourscape they made the decision to move the whole contemporary music festival into this amazing new space.

Colourscape is a very large labyrinth of colour and light – a sculpture of pure colour that the public actually go inside. Everyone puts on a coloured cape to become part of the colour experience and enters into a new world where one can freely explore the potentials of light, colour and space.

But as if that wasn't enough... there's also music, dance and theatre taking place inside! This is a full nine-day festival where the "venue" is our largest one-acre walk-in structure of nearly 100 interlinked chambers. Explore for a while and you discover long views of intense colour and light. Move forwards and another view opens up...and another...and another. Musicians and dancers are found anywhere in this extraordinary space leading the public on a journey of colour, music and space.

Check our website:  
[www.colourscape.org.uk](http://www.colourscape.org.uk)  
for any late changes.

In 2016 we present

## a festival to celebrate the senses

- Our own *Symphony of the Senses* for music, dance, colour and fragrances
- A day of music by young London composers for sound objects and concrete sounds
- Music from China and Norway
- *OSA*, our final day's commission inspired by the rainforest

### SATURDAY 10 SEPTEMBER

#### 1 to 5pm Beibei Wang and friends

Young Chinese percussionist Beibei Wang is a virtuoso who has taken the classical and contemporary music world by storm – both in China and the UK.

In her first Colourscape Music Festival event she is joined by Lin Chen to perform music by Xenakis, Steve Reich, Minoru Miki and herself.

As well as the contemporary written music Beibei will play traditional Chinese music and improvisations on a huge range of percussion.



Beibei Wang

#### 5 to 6pm Colourscape open without music.

Our Colourscape Festival One structure opens as a sculpture of pure colour.

Come and marvel at a breathtaking work of art!

The world's largest Colourscape was commissioned in 1995 by Eye Music Trust with National Lottery funding.

### SUNDAY 11 SEPTEMBER

#### 1pm to 5pm Symphony of the Senses PLUS Torgeir Vassvik



Symphony of the Senses

Eye Music Trust presents its new production: *Symphony of the Senses*. This was funded by Arts Council England Strategic Touring Fund and has toured around England throughout 2016.

All the senses are woven into a symphony: colour and light (sight); music (hearing); touch (dance and touch sensors); fragrance (smell and taste). The *Symphony* explores the human body with sounds and colours relating to Chakras.

You will see "visual touch-paintings" being "played" as instruments and laptop computers controlling a symphony of sounds. You can join in the movement and may be invited to join in playing the sensors.

Musicians: Michael Ormiston (voice); Simon Desorgher (bass flute); Lawrence Casserley (computers); David Stevens (computers). Movement artists: Tanya Richam-Odoi, Francisca Picon and Laura Dajao.

Warning: some of the fragrances are pleasant – some are not!

**Torgeir Vassvik** is a Norwegian composer/musician who combines traditional Sami "yoiking" and overtone singing with contemporary electronic music. He is part of the 2016 partnership between Eye Music Trust and Bergen International Music Festival linking the two organizations. Torgeir will perform ensembles with the resident Colourscape computer musicians.

*Symphony of the Senses* and Torgeir Vassvik will rotate throughout the afternoon so that during your one-hour Colourscape visit you will experience both events.

5 to 6pm Colourscape open without music, as a sculpture of pure colour.



Torgeir Vassvik

### MONDAY 12 TO FRIDAY 16 SEPTEMBER

#### Workshops in Colourscape with Colourscape public opening from 12 to 1pm

On the weekdays Colourscape will be open for workshops from 10am to 3pm and public access to Colourscape will be restricted to 12 to 1pm. During this time Colourscape can be explored without music and at a reduced price.

Every day from Monday to Friday there will be workshops in colour, light and music given by the Colourscape artists, musicians and performers. These workshops will cover a range of topics exploring the scientific nature of colour and light as well as art and music. If you would like to bring a group to participate in the workshop week please ring the festival telephone number to check availability.

This year we present our newest Colourscape – Moonorooni – on Monday to Thursday lunchtimes. Come and experience new views of colour. **Reduced admission price for these days!**

### SATURDAY 17 SEPTEMBER

#### 1 to 5pm Bastard Assignments

London composers collective Bastard Assignments make their Colourscape debut with an afternoon of experimental new music and performance. Expect singing, shouting, talking, intimate confessions, percussion, dance, movement, audience interaction and maybe some cake.

The afternoon will include work by Bastard Assignments composers Timothy Cape, Edward Henderson, Caitlin Rowley and Josh Spear alongside an array of guest artists and performers.

Bastard Assignments presented a tour as part of the Sound and Music Composer/Curator initiative in 2014. <http://www.soundandmusic.org/projects/welcome-composer-curator>

5 to 6pm Colourscape open without music, as a sculpture of pure colour.



Bastard Assignments

### SUNDAY 18 SEPTEMBER

#### 1 to 5pm OSA – composed by Laura Bowler and Sam Redway an immersive rainforest experience



Laura Bowler

Eye Music Rawsthorn commission

In 2016, out of many applicants, our artistic committee chose to support the creation of a new work especially composed for Colourscape: *OSA*, in which the intensity of the natural world of the rainforest is recreated within the performance space of Colourscape.

*OSA* is a response to the growing environmental crisis. After visiting the Costa Rican Rainforest in the Osa Peninsula and interviewing

conservationists to learn about the effects of near terminal levels of deforestation, the work's creators wanted to stress the importance of taking responsibility for our planet.

*OSA* brings you the opportunity to experience the awesome organism that is the rainforest. Seven physical theatre performers alongside the award-winning Ligeti Quartet and flautist, Helen Vidovich, will recreate the sounds and movement of the rainforest, amplified throughout the immersive Colourscape. This new work of cross artform music-theatre will aim to make you fall in love with the rainforest and fall in love with our environment. Playful interaction with the animals of the rainforest makes this a perfect musical and theatrical experience for families.

*OSA* performances will start on each hour and take about 45 minutes to perform. To be sure of seeing a complete performance please come at least 30 minutes before the hour to allow for any waiting time. Your ticket will admit you for up to one hour.

The Eye Music Rawsthorn commission 2017

Each year we send out a call for composers to present ideas for special Colourscape performances. Over the years we have presented music-theatre spread around the many Colourscape chambers, music for radios carried by the audience, a blindfolded choir and 35 loudspeakers, a *Symphony of Gongs*, new sculptural costumes and instruments.

Composers should check our website for information on applying for 2017.

5 to 6pm Colourscape open without music as a sculpture of pure colour.



Photo: Mark Parvin

## Colourscape

The Colourscape sculptures presented at our 2016 festival create unique environments linking music, colour and space. Highly coloured chambers are linked by elliptical openings to form a breathtaking experience of the potentials of colour and space illuminated by natural daylight. The public wear cloaks of primary colours that change in hue as they move through the intensely coloured chambers.

Whilst wandering through the interconnected chambers, you will experience the intensity and subtlety of colour. We use only translucent red, blue, green, yellow and opaque grey but you will see mixtures of colour that you may not be able to name.

The main Colourscape that we present on Clapham Common is called *Festival One* and is the largest structure of its kind in the world. It incorporates a large silver space with high columns and domed ceiling. This space forms the chamber for the larger ensembles and performances.

The *Moonorooni* Colourscape that we are presenting on Monday to Thursday lunchtimes is our smallest Colourscape – but in spite of its smaller size it has a huge range of secondary colours and a silver dome.

Your ticket admits you to Colourscape for up to an hour (longer in quiet periods).

Each visitor walks freely, choosing from many routes through Colourscape, experiencing ever-expanding views of radiating colours. Musicians may be found anywhere playing in this most unusual performance venue.

From the reactions of many thousands of visitors, it is obvious that people have strong feelings about colour. Some people describe red as a physical presence; others hesitate to step into it. Some people find green relaxing, others find it disturbing. Find out how you respond when you come to Colourscape. Many visitors are moved to express their experience in poetic terms:.....

"I felt I could almost breathe the colours."

"The blues and soft greys went on forever. I could feel myself expanding with the red and growing calmer with the greens and blues. The people were dancers on a stage like a surreal abstract ballet. The music was excellent and much appreciated."

*Please do be aware of other people's enjoyment of the music and the space – particularly keeping any noise to a minimum in the main music listening areas*

Look on our website: [www.colourscape.org.uk](http://www.colourscape.org.uk) for more views of Colourscape.

Colourscapes are created by artists Peter Jones and Lynne Dickens and constructed with help from artist Becky Knight. Our *Festival One* (1994), *Festival Two* and *Moonorooni* Colourscapes have been commissioned by the Eye Music Trust with funding from the National Lottery, Foundation for Sport and the Arts, Arts Council England and City Bridge Trust.



## ADMISSION RATES

**Weekend openings: 1 to 6pm**  
(each ticket admits to Colourscape for up to an hour)

Adult	– £10.00
Child	– £5.00
Family Ticket (up to 2 adults and 3 children)	– £28.00

Children must be accompanied by an adult.  
Children under 2 are free.

**Weekday reduced price without music from 12 to 1pm**

MONDAY TO THURSDAY LUNCHTIMES	
Adult	– £5.00
Child	– £2.00
Family ticket (up to 2 adults and 3 children)	– £13.00

FRIDAY LUNCHTIME	
Adult	– £6.00
Child	– £3.00
Family Ticket (up to 2 adults and 3 children)	– £16.00

**Festival enquiries: 020 8763 9298**

**Site mobile: 07905 974922**

## SITE AND ADMISSION

- Colourscape will be installed on Clapham Common, off Rookery Road, near the Long Pond boating lake and The Windmill pub. Colourscape will be open from 1 to 6pm at weekends, 12 to 1pm on weekdays.

- Admission will be available only at the door during festival times. There is a limit on numbers for each performance due to safety and licensing requirements, so come early to avoid disappointment.

- Children must be accompanied by an adult.

- Colourscape will normally open in all weather conditions except for high winds. However, Eye Music Trust will not be held responsible for cancellations due to weather or other reasons.

- The festival will not be held responsible for losses of personal property while in Colourscape.

- There will be easy access for people with disabilities and a helper will be on hand for those in wheelchairs.

## TRAVEL



**Nearest underground station**  
Clapham Common, Northern line.



**Buses to Clapham Common are:**  
35, 45, 88, 118, 131, 155, 189

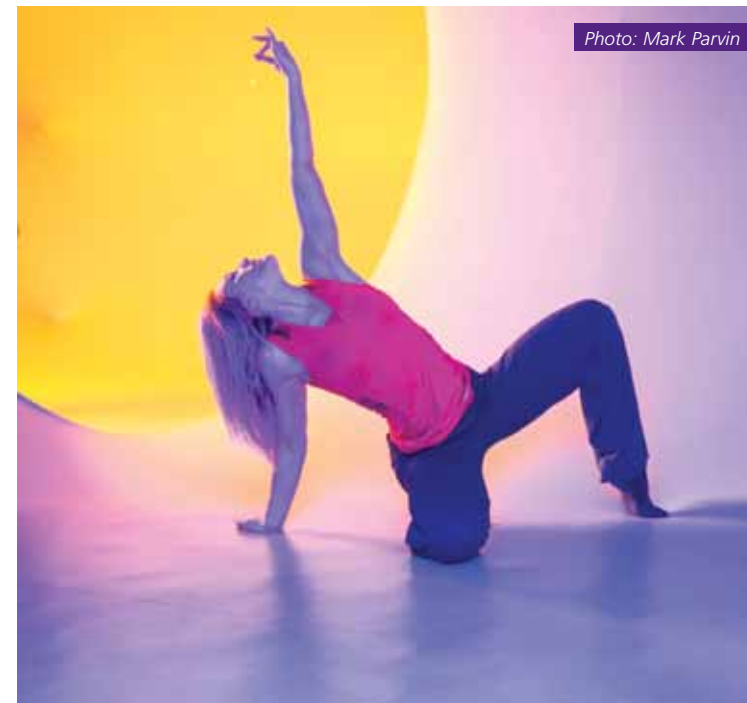


Photo: Mark Parvin

## Colourscape safety and weather

- Colourscape has an excellent safety record with no major incidents over 40 years.
- Our safety is based on our large, trained team. On our larger Colourscapes ten experienced stewards look after all aspects of public safety and are there to answer questions and help you to enjoy the experience fully.
- We employ a specially-designed wind-break system that reduces the power of any wind by 65% and can be seen running around the whole structure.
- Colourscape has been tested by independent safety engineers and passed as meeting high standards of anchoring and stewarding.
- We never show Colourscape in strong winds.
- Colourscape is not affected by rain as all events take place under cover.

## Eye Music Trust was given Regularly Funded Organisation status by Arts Council England in 2008

The festival is presented by Eye Music Trust.  
Trustees: David Elliot, Simon Emmerson, Jane Manning OBE, Anthony Burton, Nicky Rogers, and Edwin Roxburgh.  
Company Secretary: Antony McDonald  
Festival Directors: Lawrence Casserley and Simon Desorgher.  
Production Manager: Izzy Liney  
Front of House Manager: Paul Currier  
Sound Engineer: Matt Saunders  
A team of 12 look after Colourscape installation and public enjoyment and safety.



Supported using public funding by  
**ARTS COUNCIL ENGLAND**

**City Bridge Trust**  
The City of London Corporation's Charity



eyemusic

PRESENTS THE 2016 COLOURSCAPE MUSIC FESTIVAL

